



4/1 Nova Street Waterford, QLD



## Affordability at its Finest !!! This amazing first home / investment opportunity

Set on a quite leafy street, close to parklands, shopping precincts and schools this well-presented contemporary residence offers an idyllic low maintenance and stylish lifestyle. Beautifully presented and spaciouly designed, the ground floor is dedicated to living and dining. Offering warm, neutral tones throughout this home offers a relaxed and elegant ambience with a well-designed and stylish kitchen.

Upstairs you will discover a quality living experience. The master is well sized, with large windows that offer a leafy outlook to the streetscape below. Offering an elegant ensuite and well- proportioned walk-in robe with his and her zones, it provides a tranquil retreat and delectable living experience. The second bedroom is well proportioned and offers lush leafy elevated views. With built in robes, access to a beautifully designed family bathroom with separate toilet, it offers a relaxing living experience.

Features of this stylish property include:

- Spacious open plan kitchen/dining & living area
- Additional toilet on ground floor

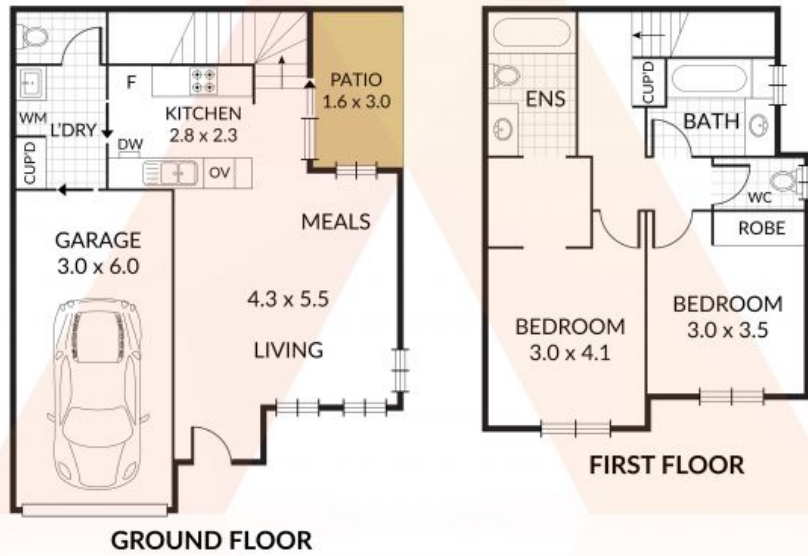
\$249,000+

**Type:** House  
**Land:** 113 m2  
**Building Size:** 86 m2



**Jay Aston**

0416 140 227



NOTE: Every precaution has been taken to verify the accuracy of the details. However, prospective purchasers are advised to make their own enquiries.

