



16 Mount Huntley Street Park Ridge, QLD

 3  2  1

Stress free living in the ideal location

Simple in stature yet appealing and innovative in design, this 2018 built home is alluring and exciting.

Starting with an elegant street presence and a welcoming entry, you are greeted with a contemporary colour palette and innovative design.

The master bedroom, perfectly positioned at the front of the home, offers a relaxing air-conditioned space featuring triple sash windows, walk-in-robe and ensuite.

Heading down the tiled hall, the 2 additional bedrooms boast ceiling fans and robes and share a wonderful family bathroom with shower, bath and separate toilet.

The kitchen, located in the heart of the home, includes quality benchtops, mint condition appliances, exceptional step-in pantry and breakfast bar subtly dividing the dining and living spaces. Superior ceiling heights throughout the home provide light and air flow.

16 Mount Huntley Street Park Ridge

Contact Agent

Type: House
Land: 250 m2



Melissa Verschuur

0415 745 210

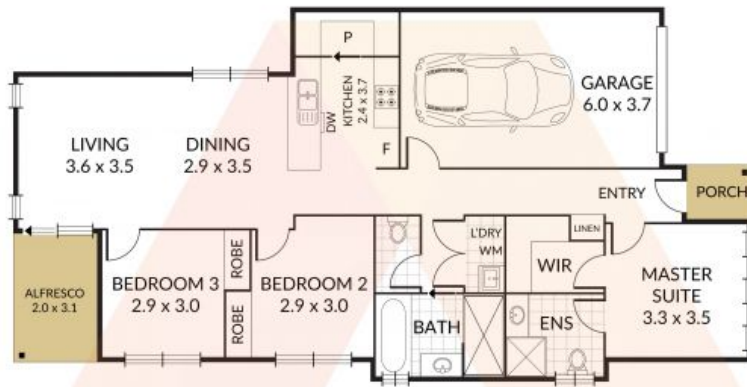


Michael Verschuur

0434 355 114

16 Mount Huntley Street, Park Ridge

3 x 2 x 1 x



NOTE: Every precaution has been taken to verify the accuracy of the details. However, prospective purchasers are advised to make their own enquiries.



16 Mount Huntley Street, Park Ridge, QLD