

3701/33 Surf Parade Broadbeach, QLD

4 2 2

Full Floor Penthouse

With no compromise on quality, this sub-penthouse leaves nothing to desire. The finest calibre of finishes awaits - from feature pendant lighting to the brushed gold fixtures complementing the flawless stone and marble, the glamour of Infinity is showcased in every aspect.

Floor to ceiling glass frames the uninterrupted, 360 degree views on offer, welcoming in natural light, while the gourmet kitchen is custom designed to feature the very best premium appliances, marble benchtops, and designer finishes for next level prestige and functionality. Spacious balconies also add to your entertaining space. Here, make the most of the balmy Broadbeach climate with alfresco areas which seamlessly integrate with your internal living and dining zones.

- Panoramic 360-degree unobstructed views of the ocean, hinterland, and city skyline;
- Open plan, north facing living space blends seamlessly with expansive wrap around balconies, maximising the luxurious living and entertaining areas;
- Walk in robes as well as ensuites accompany each of the four generously sized bedrooms;
- Ducted air conditioning throughout;

CONTACT AGENT

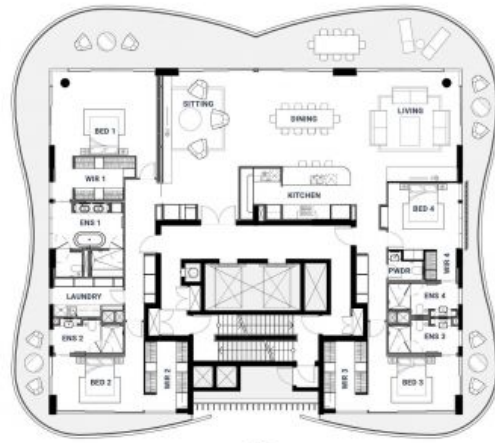
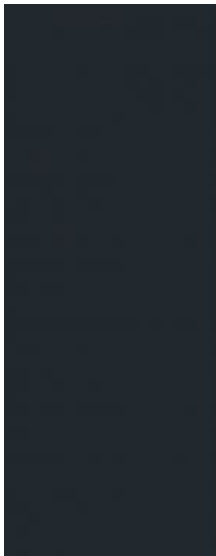
Type: Unit
Building Size: 437 m2



Caesar Walkins
0466 969 017



Bree Johnson
0409 397 051



Whole Floor Residence

LEVEL 29-30

4 BEDROOM
4.5 BATHROOM
2 CAR SPACE

DIMENSIONS

Internal	External	Total Area
399m ²	142m ²	451m ²

Living	Dining	Laundry
5.7 x 5.2m	4.0 x 4.0m	3.3 x 2.0m
Sitting	Kitchen	Powder Room
4.3 x 7.1m	5.0 x 2.8m	1.8 x 1.5m

Bed 1	Ensuite 1	WR 1
5.5 x 4.5m	3.7 x 3.0m	3.2 x 2.2m
Bed 2	Ensuite 2	WR 2
4.8 x 2.8m	3.7 x 1.6m	3.7 x 3.6m
Bed 3	Ensuite 3	WR 3
4.9 x 2.8m	3.7 x 1.7m	2.2 x 3.6m
Bed 4	Ensuite 4	WR 4
3.7 x 3.9m	3.7 x 1.7m	1.6 x 1.9m