



25-27 Quandong Court New Beith, QLD

 4  2  8

CURRENTLY AVAILABLE FOR INSPECTION...

With a beautiful heritage-inspired facade and an impressive 4,043sqm land size, this is a home that offers all the charm of country living paired with contemporary comforts. The layout is light-filled and spacious with a flexible design to suit the modern buyer.

There are four bedrooms including a large owner's suite with a sitting nook, a walk-in robe, and an ensuite with twin sinks. The two guest bedrooms both have built-in robes and easy access to the main bathroom with a bath and separate toilet.

A lovely light-filled living room is set at the front of the layout, offering added flexibility should you desire an office, a playroom or even a guest suite. Everyday life is sure to revolve around the open-plan family room with a dining area and an updated kitchen. Here, the budding chef is treated to a breakfast bar, quality appliances, and lots of storage and bench space to make catering for loved ones a breeze.

- 4 Bedrooms - all with built in robes
- 2 Bathrooms
- Built in 1995 by Regency Homes

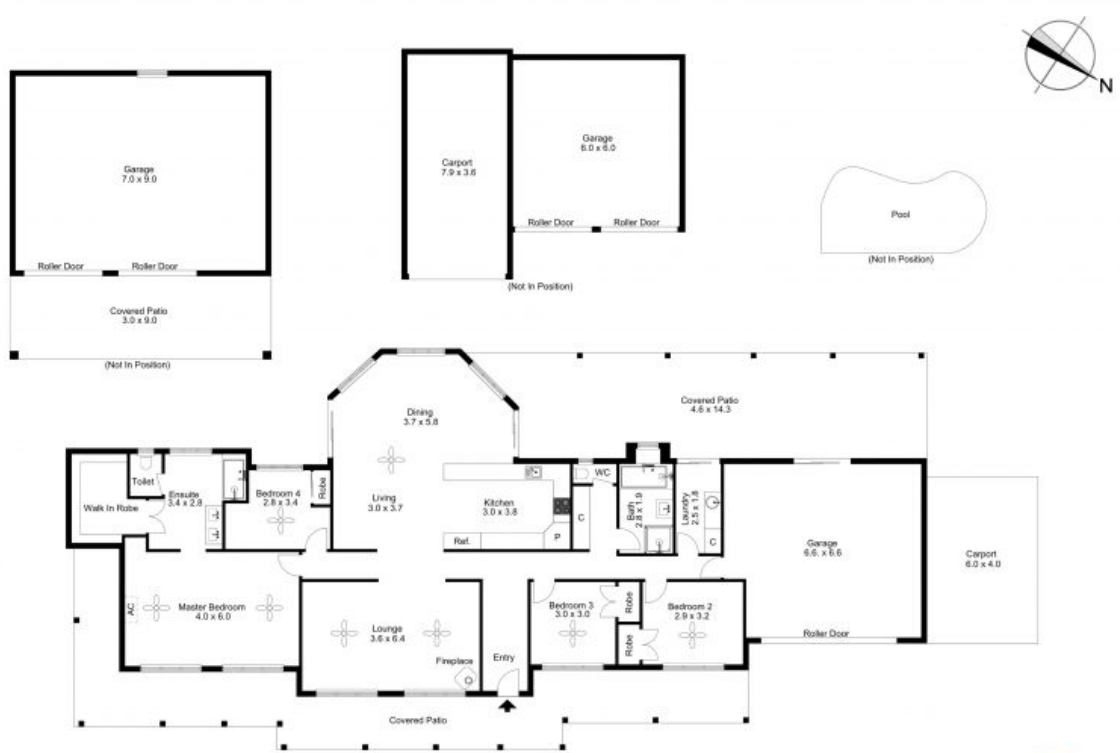
ENQUIRE FOR PRICE GUIDE

Type: House
Land: 4035 m2



Chris Gilmour

0438 632 459



The floor plan is not to scale; measurements are indicative and in metres. Exterior elements are not in position. Plans should not be relied on. Interested parties should make and rely on their own enquiries.